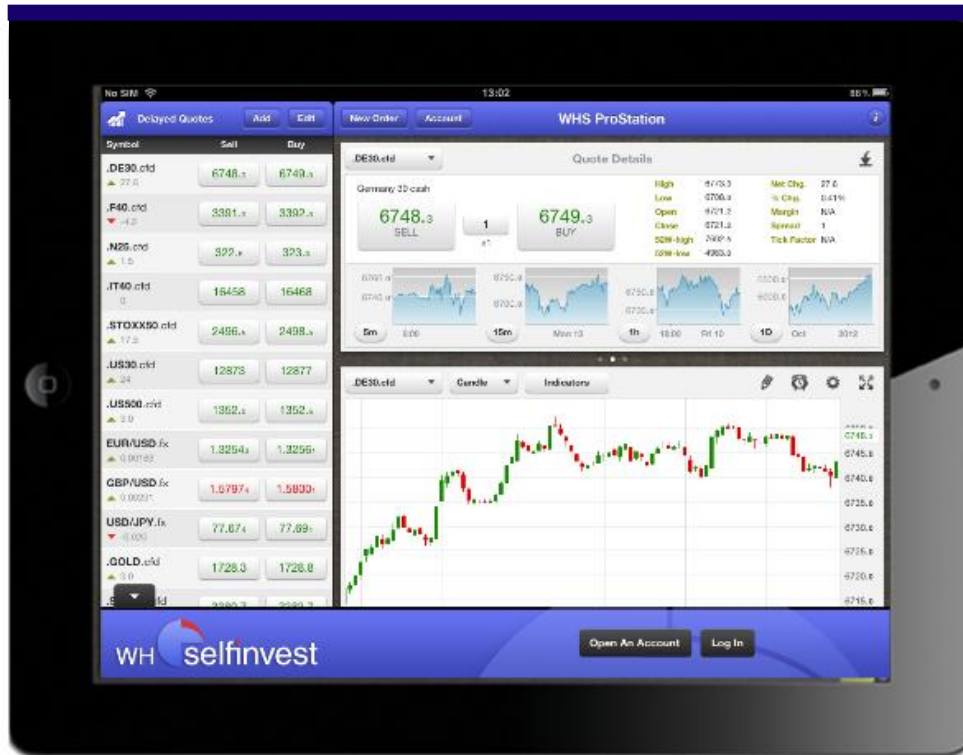


WHS ProStation iPad App



Nehmen Sie Ihre WHS ProStation mit wohin Sie wollen.

Vollbildanzeige von Charts, Positionen, Orders und Alarmen.

Über 30 verschiedene Indikatoren und Features zur technischen Analyse.

Entdecken Sie alles was die WHS ProStation iPad App zu bieten hat.



Genereller Überblick

Auswahl und Suche von Symbolen

Charts

Technische Analyse

Orders

Alarmer

Support



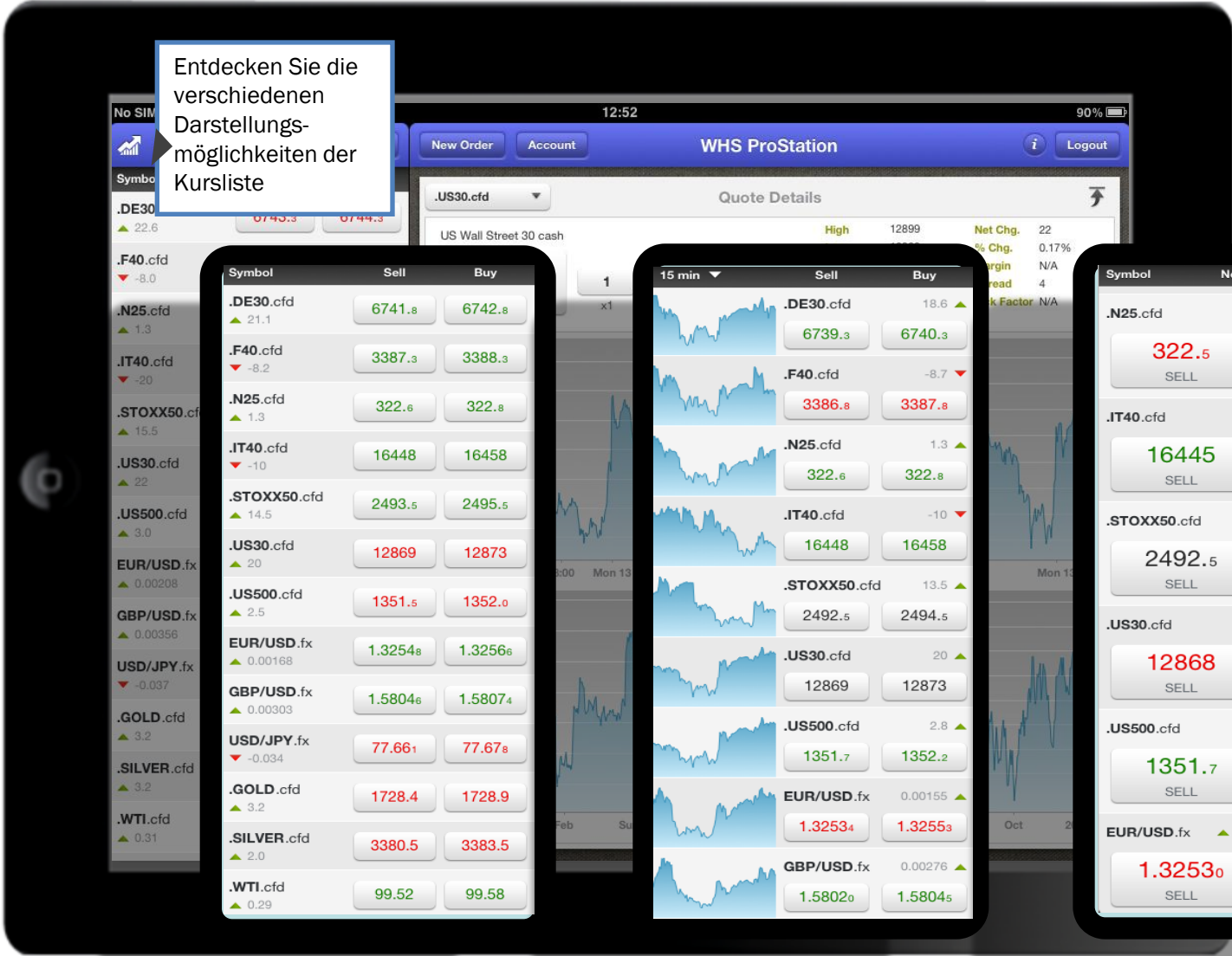




Symbol	Sell	Buy
.DE30.cfd ▲ 22.6	6743.3	6744.3
.F40.cfd ▼ -8.0	3387.5	3388.5
.N25.cfd ▲ 1.3	322.6	322.8
.IT40.cfd ▼ -20	16438	16448
.STOXX50.cfd ▲ 15.5	2494.5	2496.5
.US30.cfd ▲ 22	12871	12875
.US500.cfd ▲ 3.0	1352.0	1352.5
EUR/USD.fx ▲ 0.00208	1.32586	1.32607
GBP/USD.fx ▲ 0.00356	1.58099	1.58127
USD/JPY.fx ▼ -0.037	77.656	77.675
.GOLD.cfd ▲ 3.2	1728.4	1728.9
.SILVER.cfd ▲ 3.2	3381.7	3384.7
.WTI.cfd ▲ 0.31	99.54	99.60



Entdecken Sie die verschiedenen Darstellungsmöglichkeiten der Kursliste



Symbol	Sell	Buy
.DE30.cfd	6741.8	6742.8
.F40.cfd	3387.3	3388.3
.N25.cfd	322.6	322.8
.IT40.cfd	16448	16458
.STOXX50.cfd	2493.5	2495.5
.US30.cfd	12869	12873
.US500.cfd	1351.5	1352.0
EUR/USD.fx	1.32548	1.32566
GBP/USD.fx	1.58046	1.58074
USD/JPY.fx	77.661	77.678
.GOLD.cfd	1728.4	1728.9
.SILVER.cfd	3380.5	3383.5
.WTI.cfd	99.52	99.58

Symbol	Sell	Buy
.DE30.cfd	6739.3	6740.3
.F40.cfd	3386.8	3387.8
.N25.cfd	322.6	322.8
.IT40.cfd	16448	16458
.STOXX50.cfd	2492.5	2494.5
.US30.cfd	12869	12873
.US500.cfd	1351.7	1352.2
EUR/USD.fx	1.32534	1.32553
GBP/USD.fx	1.58020	1.58045

Symbol	Net Change	Order Size
.N25.cfd	322.5	1
.IT40.cfd	16445	1
.STOXX50.cfd	2492.5	1
.US30.cfd	12868	1
.US500.cfd	1351.7	1
EUR/USD.fx	1.32530	1

Open Positions Working Orders (3) Filled Orders Alarms (1)

Symbol	B/S	Size	Price	Type	Status	Expiration
2811448 (EUR)						
.DE30.cfd	BUY	1	6800.0	LMT	WORKING	GTC
.DE30.cfd	SELL	1	6825.0	LMT OCO	CONTINGENT	GTC
.DE30.cfd	SELL	1	6750.0	STP OCO	CONTINGENT	GTC

WHS ProStation 90% Logout

Quote Details

Wechseln Sie zwischen Kursdetails, Kontoinformationen und LiveNews.

.STOXX50.cfd

Quote Details

EU Stocks 50 cash

2494.5 SELL 1 2496.5 BUY x1

High	2510.5	Net Chg.	15.5
Low	2488.5	% Chg.	0.62%
Open	2499.5	Margin	N/A
Close	2480.0	Spread	2
52W-high	3077.5	Tick Factor	N/A
52W-low	1934.0		

Today's News

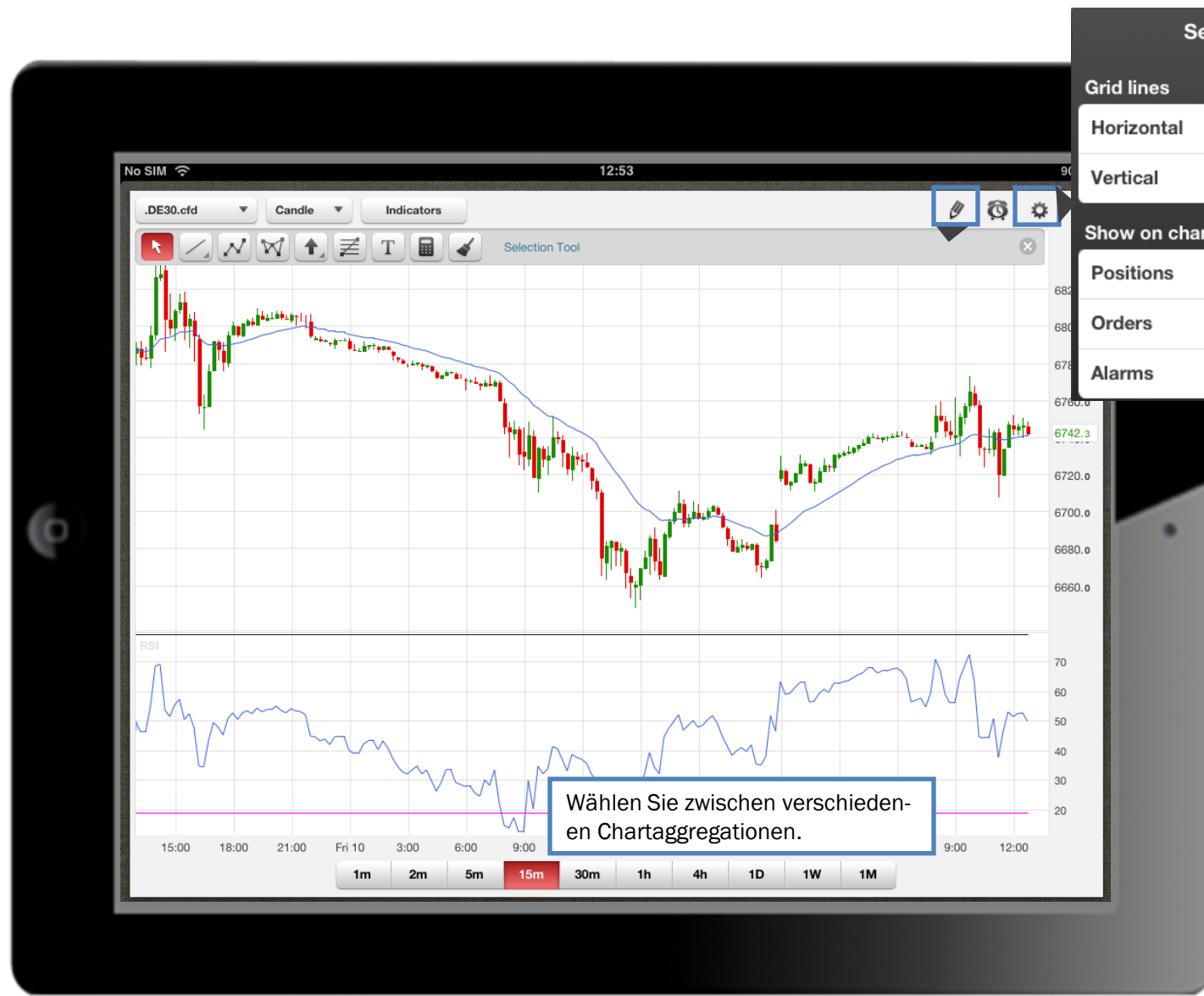
- 13 February 2012 12:49 - 7 minutes ago (IGM)[EU'S REHN] has welcomed the Greek parl vote (to pass the austerity plans) as it is a sign of their...
- 13 February 2012 12:39 - 17 minutes ago (IGM)[EUROPEAN FX MORNING ROUNDUP] There is nothing to come on the North American front so it could be an...
- 13 February 2012 12:29 - 27 minutes ago (IGM)[EMU LATEST] [BANK OF ITALY] is exploring technical problems with the submission of bids at its BOT aucti...
- 13 February 2012 12:29 - 27 minutes ago (IGM)[EUR/SEK] is finding it hard to follow in the footsteps of the sell-off in [EUR/NOK]...
- 13 February 2012 12:19 - 37 minutes ago (IGM)[UK TSY MIN HOBAN] has expressed his disappointment over news that five UK banks that signed up to the...
- 13 February 2012 12:09 - 47 minutes ago

.GOLD.cfd	1728.4	1728.9
.SILVER.cfd	3381.7	3384.7
.WTI.cfd	99.54	99.60



The screenshot displays the WHS ProStation mobile application interface. On the left, a search menu is open, listing various market categories and symbols. A white callout box with a blue border is overlaid on the menu, containing the text: "Klicken Sie auf den Add-Button, um Kontrakte zu suchen und angezeigte auszuwählen." The main screen shows the "Quote Details" for the selected symbol, ".ES35.cfd", with a price of 12874 and a "BUY" button. Below the quote details are three small line charts for different timeframes: 5m, 15m, and 1h. At the bottom, a large candlestick chart for ".US30.cfd" is visible, showing price movement from late 2011 to early 2012. The interface includes a top navigation bar with "Cancel", "Search", "Add", "New Order", and "Account" buttons, and a "Logout" button in the top right corner.





Wählen Sie zwischen verschiedenen Chartaggregationen.



Analysieren Sie den Chart mit einer Vielzahl von verfügbaren Zeichentools.







